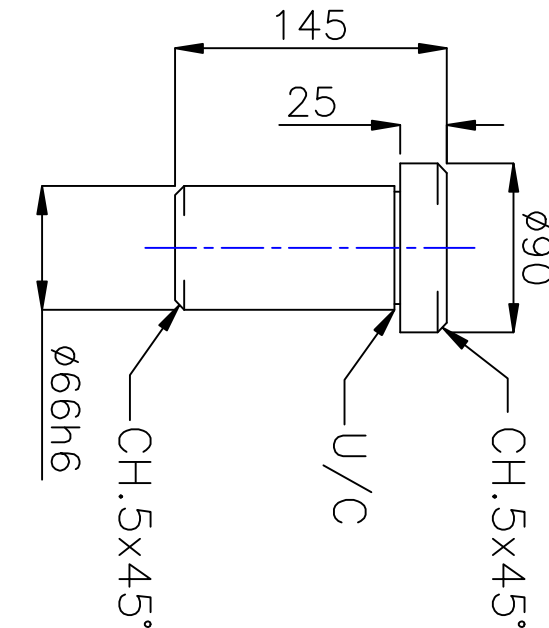
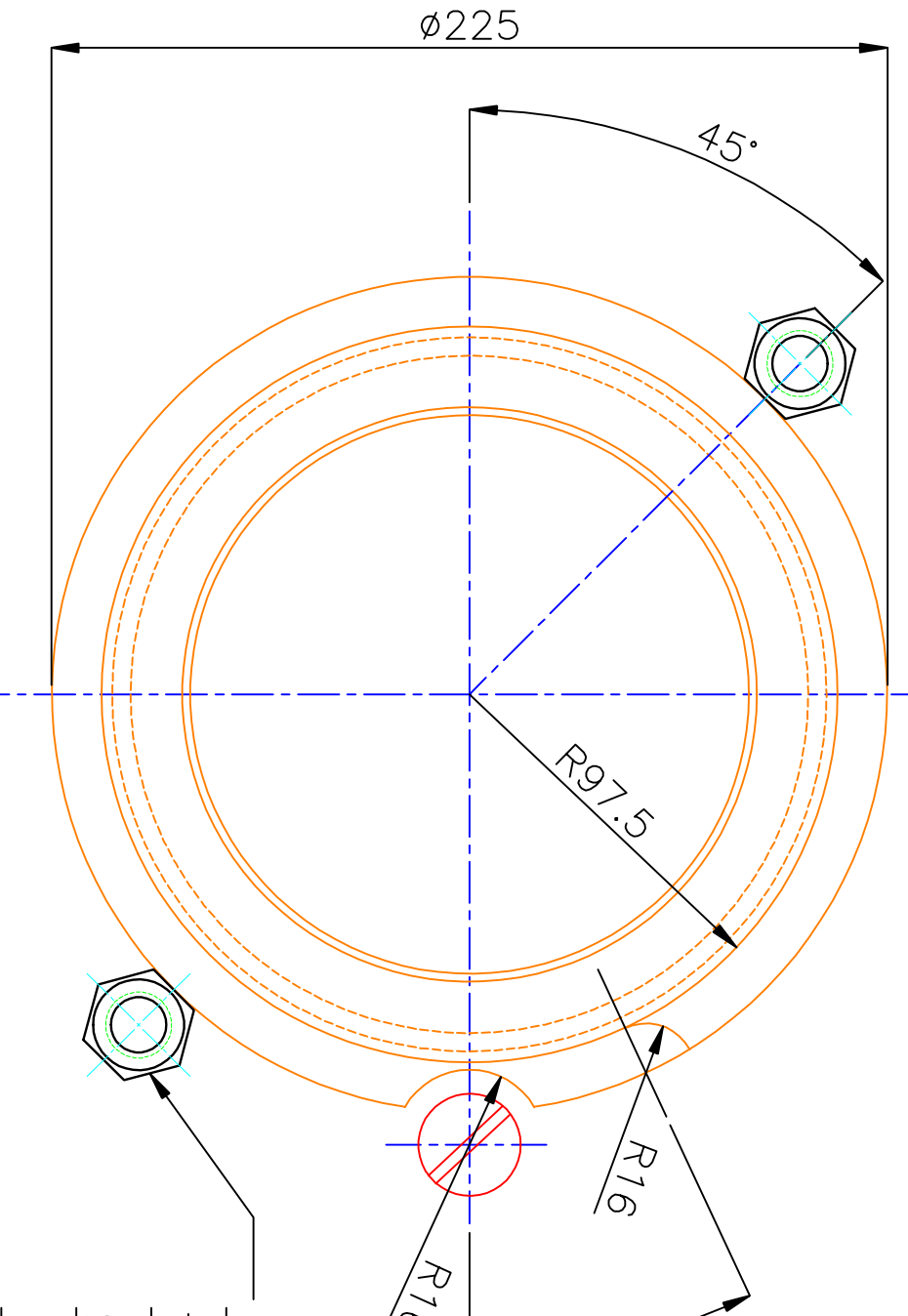


Technical drawing of a mechanical part, likely a shaft or tube, showing dimensions and tolerances. The drawing includes a side view and a cross-sectional view.

Dimensions and Tolerances:

- Total length: 200
- Length of the main section: 185h6
- Outer diameter: $\phi 185h6$
- Inner diameter (cross-section): $\phi 17$
- Inner diameter (tolerance): $\phi 17 \begin{smallmatrix} 0 \\ 0.02 \end{smallmatrix}$
- Chamfer: CH.F. 3x45
- Fillet radius: R2
- End view diameter: 17



002
2-OFF

ADDITIONAL INFORMATION FOR M/C 10L REF. 1051 110/M	
STATUS OF DRAWING	1
DISTRIBUTION OF PRINTS	
TCM(P) NO.....04	
TE(H)R).....01	
TE(X)H(P).....01, O/C.....01	
REV. DATE	ALTERED
	CHECKED
	APPROVED
ZONE	

NOTE FOR H.R.P.

1. CLAMPING ARRANGEMENT OF DRILL-PLATE ON COMPONENT TO BE ARRANGED BY H.R.P.

2. DRILL PLATE TO BE LOCATED ON COMPONENT BEFORE TAPPING. M72, USING IT#002 IN 2-HOLES, SHOWN WHICH HAVE BEEN MADE USING TOOL NO.-1396013

3. DIA. MARKED * MUST BE CONCENTRIC.

HOLE REF. FOR IT#001
A - 10 - HOLES Ø185 H7, ON
PCØ2050.00 AS SHOWN.
B - 10 - TAP M12, AS SHOWN.
C - 2 - HOLES 66H7 ON PCD 2000.00, AS SHOWN, FOR LOCATION PURPOSE.
D - 4 - TAP M36, FOR LIFTING, POSITIONS LEFT TO SHOP.
E - 6 - HOLES Ø250 ON PCD1950 AS SHOWN, FOR WEIGHT REDUCTION.

A - 10 - HOLES Ø185 H7, ON
PCØ2050.00 AS SHOWN
B - 10 - TAP M12, AS SHOWN.

C - 2 - HOLES 66H7 ON PCD 2000.00, AS SHOWN, FOR LOCATION PURPOSE.
D - 4 - TAP M36, FOR LIFTING. POSITIONS LEFT TO SHOP.
E - 6 - HOLES ϕ 250 ON PCD1950 AS SHOWN, FOR WEIGHT REDUCTION.

3. DIA. MARKED * MUST BE CONCENTRIC.

DRILL PLATE TO BE LOCATED ON COMPONENT BEFORE TAPPING M72. USING IT#002 IN 2-HOLES SHOWN WHICH HAVE BEEN MADE USING TOOL NO.-1596013

3. DIA. MARKED * MUST BE CONCENTRIC.

THE INFORMATION ON THIS DOCUMENT IS THE PROPERTY OF BHARAT HEAVY ELECTRICALS LIMITED.
IT MUST NOT BE USED DIRECTLY OR INDIRECTLY IN ANY WAY DETRIMENTAL TO THE INTEREST OF THE COMPANY.

INVENTORY NO.

SIGN & DATE

REF. DRG. NO.

A1 SIZE